

Conscientiology Summary

What would a map of a human's paranatomy look like?

A map of the consciousness' vehicles of manifestation

Chakras

1. Coronary

(Coronochakra)

2. Frontal

(Frontochakra)

3. Laryngeal

(Laryngochakra)

4. Cardiac

(Cardiochakra)

5. Splenic

(Splenochakra)

6. Umbilical

(Umbilicochakra)

7. Radical

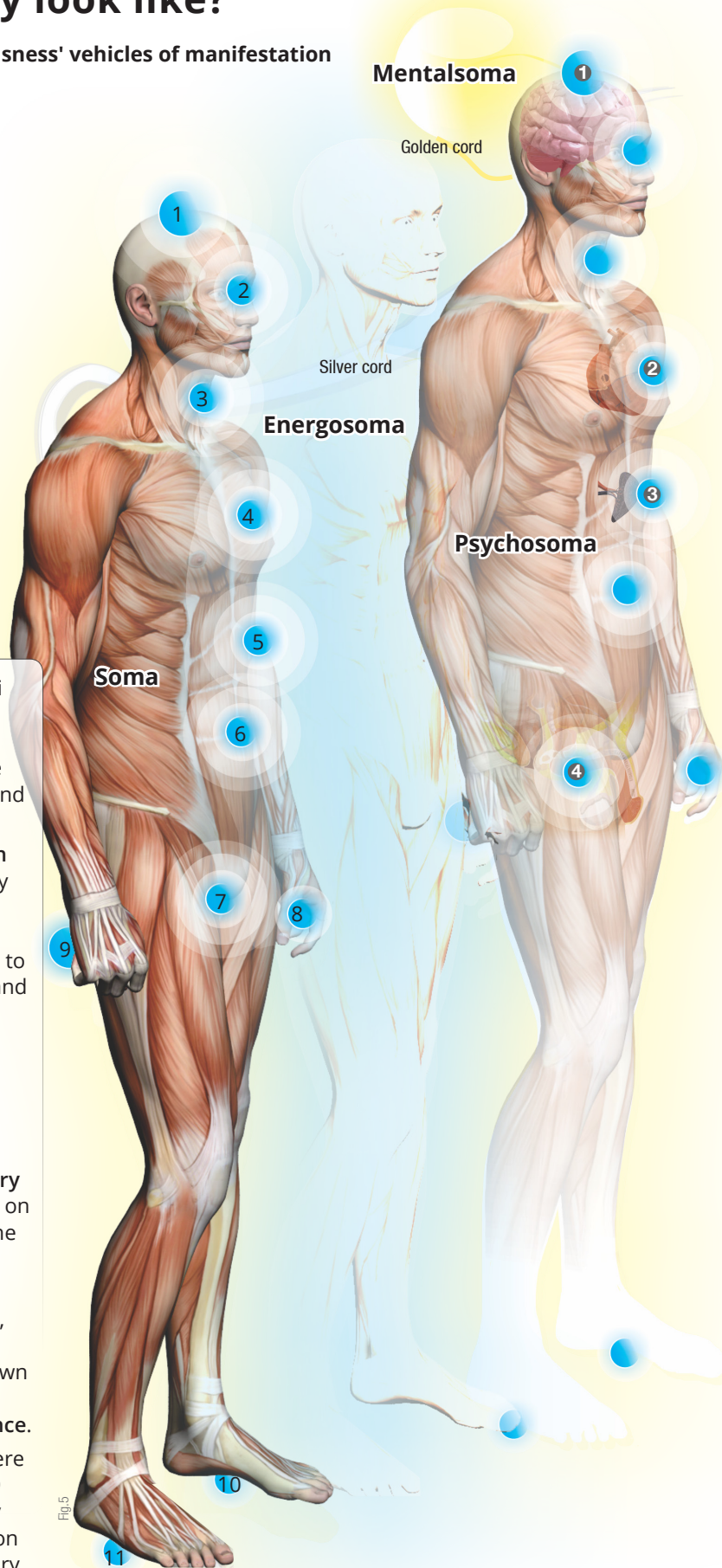
(Sexochakra)

Secondary

8/9. Palmchakras

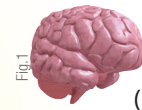
10/11. Plantarchakras

- The **chakras** are nuclei or fields of energies that **constitute the energosoma**, a vehicle that unites the soma and the psychosoma.
- They act as **connection points** by which energy flows from one body (body and parabodies) to another. In addition to connecting the soma and the psychosoma, they collect and distribute immanent energy, transforming it into consciential energy.
- These energy vortices have **different vibratory gradations** depending on the manifestation of the consciousness.
- The more a consciousness evolves, the more it perceives and makes use of its own energetic capabilities **with greater intelligence**.
- It is **estimated** that there are still **around 88,000** secondary and tertiary force centres in addition to the 7 basic or primary chakras.



Highlights

1 Coronochakra



It is related to the **mentalsoma** (discernment parabody) in regard to the transmission of ideas, rationality, elevated feelings, serenity and consciential balance (holomaturity). It is turned upwards and allows for an expansion of consciousness. It is considered the most important of the chakras.

2 Cardiochakra



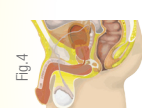
It is related to the **psycho-soma** (emotional parabody), being an influential agent in a human personality's emotionality, from romanticism to emotional balance, that is, from the constant immaturity of some adults to the highest level of consciential maturity. It vitalizes the heart and the lungs.

3 Splenochakra



It is related to the **energosoma** (energetic parabody). It is located in the abdominal region of the spleen. It selects and distributes vitalizing energies throughout the organs of the human body.

4 Sexochakra



It is an absorber of primary energies, and is the chakra that **activates all the other chakras**. Located in the perineum area, between the sacrum and the genitals, it is the seat of **kundalini**, or raw consciential energy. It is closely related to instincts and sexuality. Its activity is triggered by the reception of geoennergies through the soles of the feet (plantochakras), also known as pre-kundalini chakras.

Figure 1. Illustrative representation of the consciousness' vehicles of manifestation (parabodies) that highlight some paramorphological characteristics and the human muscular system. The colours of the vehicles and chakras are merely figurative.

Conscientiology seeks to understand the biological evolution of the human being, as well as the evolution of the integral consciousness and its conscial microuniverse. It is interested in biological and psychological maturity and, most importantly, integrated, multi-existential, multidimensional and multimillennial conscial holomaturity.

If we could separate the vehicles...

The **conscin** is characterized by the holosoma, which composes **all vehicles** of manifestation. Even when projected, the psychosoma connects to the human body through the silver cord

Soma



The soma, or human body, is a **replica** of the psychosoma. It is subject to the laws of genetics and manifests within the planet's biogravitational field. One of the soma's main organs, the **brain**, is the intraphysical **seat** of the **consciousness**.

Aspects:

- It is the consciousness' most rustic vehicle.
- Its interrelationship with the psychosoma, which includes the silver cord, is mediated by the energosoma.

Energosoma



The energosoma is a set of structured conscial energies that connect the conscin's (intrapysical consciousness) psychosoma to its soma.

Aspectos:

- It absorbs energy and **distributes** it throughout the body.
- It reacts to thoughts and emotions, influences bodily functions and controls the human body's **metabolism**.
- It is unknown by Western medicine. It is used in **Chinese medicine** to explain about some healing methods, such as acupuncture and auricular therapy. The healing processes associated with **homeopathy** are also related to the energetic rebalancing of the conscin.

Psychosoma



The psychosoma is the parabody of **emotions**. It makes human sensations possible. It is a **biological organizing** model which is restructured in the pre-soma phase (before intraphysical rebirth). It acts in the extraphysical dimensions.

Aspects:

- It serves as a "bridge" between the free mind and the human brain.
- Location of the **chakras**.
- Most conscins are not **aware of the psychosoma**.
- In certain circumstances, it is as **objective** for the **lucidly** projected conscin as the human body is in the intraphysical dimension.
- Unlike the dense matter of the physical body, the constitution of the psychosoma does not suffer the effects of time. In general, after desoma, consciousnesses tend to have their psychosoma **rejuvenated**.

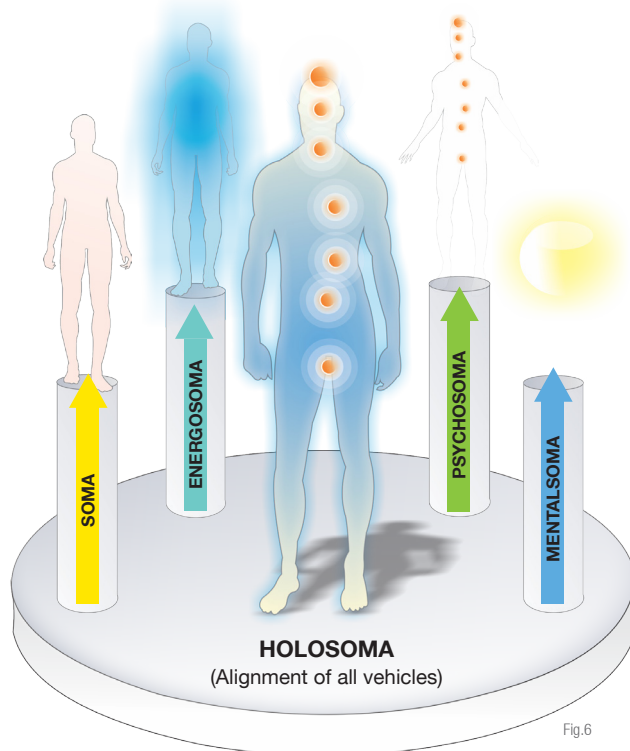


Fig.6

Mentalsoma

The mentalsoma is the conscin's vehicle of manifestation when acting alone and without the other vehicles. It is **located in the psychosoma's parabrain**.

Aspects:

- It is the vehicle of the **mentalsomatic dimension**.
- It is a transmitter of images or an irradiator of mental waves.
- It is **imperceptible** to human eyes because it transcends form and space that is known in the physical dimension.
- It is **free** of sexual impulses and contains the consciousness' continuous integral memory (**holomemory**).
- The psychosoma is directly responsible for manifesting the consciousness' primary emotions, while the **mentalsoma** is responsible for **elevated feelings**, or rationalized emotions.

Infotares

infotares.org

Conscientiology Summary; 2017 November.

Production: Flávio Monteiro. Proofreading: Antonio Pitaguary, Isabele R. Nascimento and Pedro Marcelino. Translation: Alba Cardoso and Jaclyn Cowen. Revision: Jeffrey Lloyd.

Illustrations Copyright: Dreamstime® (Figs. 1,2, 3 and 4).

Disbelief principle: Do not believe anything, not even the information in this publication. The smart thing to do is conduct personal research on the subject.